

Charter  
County  
Of  
Wayne,  
Michigan



2006  
annual report

ENSURING THE WELL-BEING OF OUR COMMUNITIES

Our Mission is to lead  
the nation in providing exemplary and  
efficient services that continuously promote and  
enhance the highest quality of life for those who  
choose to live, work, visit and play  
in Wayne County.



**In 2006, the citizens of Wayne County** were repeatedly jolted by the decisions of the domestic automakers to close factories and cut workers. Throughout the year, we were inundated with news from Ford Motor Company, General Motors and DaimlerChrysler AG of disappointing earnings and their plans to downsize. In an era of declining revenues and ever increasing social burdens, this disappointing news further increased the demand for County services, as both Ford and General Motors are headquartered in Wayne County and many of its laid-off employees are our citizens. It is times like these, that governments are asked to rise to the occasion, and do more with less. The County accepted this challenge in 2006, and has continued to deliver a full range of exemplary core services countywide. Those services reflect an enduring commitment to our employees, customers, stakeholders, partners and the communities in which we operate.

We are also excited to be back on track with our financial reporting. The County issued eighteen financial reports in a sixteen month period. We are committed to issuing timely financial statements in the future, as it is something that our stakeholders demand and deserve. At the same time, the County is also committed to incrementally improving our processes, systems, and skills, and to measuring our performance against national standards to ensure that our business is sustainable on every level and contributes to improving the quality of life of every stakeholder. This is a challenge that we readily accept and one that I champion. Stay tuned for more information on this initiative in the 2007 annual report.

In the following pages, you will learn more about our departments and elected offices and how we deliver services. You will learn that despite budget cuts and increased healthcare costs, we delivered. We promised and we delivered with hard work, commitment and a strong foundation. **A few examples from the past year include:**

- ✦ **Exceptional outcomes as evidenced by our Nuisance Abatement Program (NAP). More than 400 property owners legally agreed to fix up their properties in an effort to clean up our neighborhoods.**
- ✦ **Innovative safety and welfare advances such as the County's community wide-alert program. This system will notify all Wayne County residents by email, telephone or other personal devices in the event of an emergency. The service is free for all that have signed up and is the first of its kind in the nation.**
- ✦ **An extraordinary spirit of service shown by our employees and volunteers through the generous support of our children and seniors programs. Many have packaged and delivered food to homebound seniors and other citizens who need assistance to feed their families.**

On behalf of Wayne County's 5,000 plus employees, thank you for supporting our commitment to providing the very best service delivery to all our stakeholders and their families.

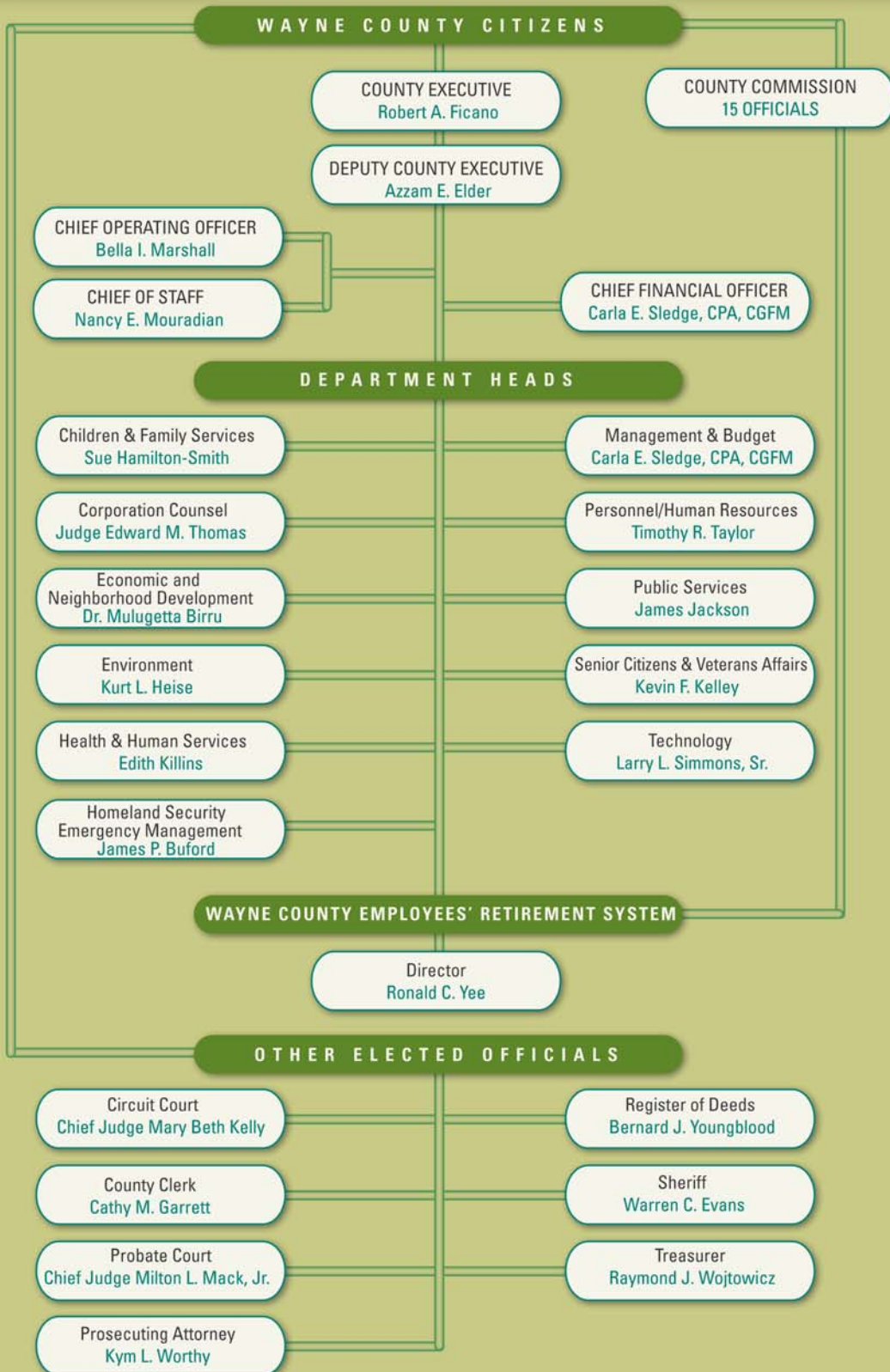
The road ahead will be challenging, but not without reward, as our destination is clear. Our partners and our employees remain committed to providing quality services to our citizens in a cost effective manner. Our goal is to raise the service delivery bar in Wayne County even higher and deliver exemplary services that surpass customer expectations. If we want our children and grandchildren to stay here to attend school, live, work, and raise their families, we have got to give them a reason.

***We hope you enjoy reading Wayne County's 2006 Annual Report. We look forward to another challenging but exciting year for the County in 2007.***

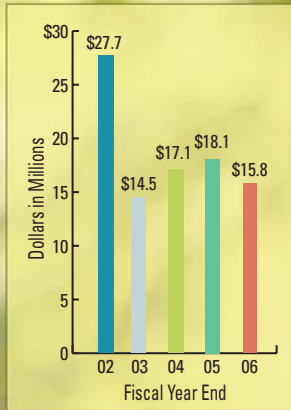
**Robert A. Ficano**

*Chief Executive Officer*

O R G A N I Z A T I O N A L C H A R T



FUND BALANCE  
UNRESERVED

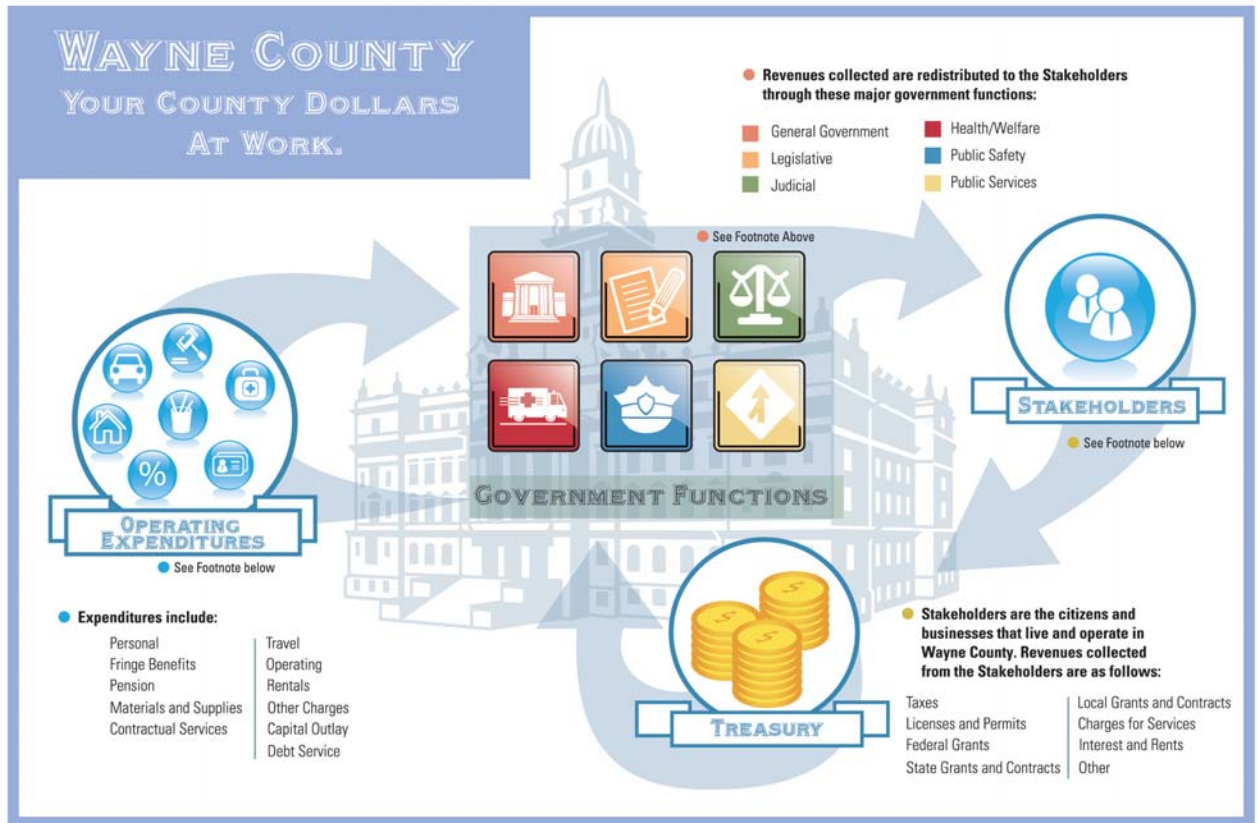


# Balance

Fund balance typically is the most-discussed item in a local government's financial statements. Governments seek to maintain adequate levels of fund balance to mitigate current and future risks and to ensure stable tax rates. Fund balance is also a crucial consideration in long-term financial planning. Additionally, credit rating agencies carefully monitor levels of fund balance and unreserved fund balance in a government's general fund to evaluate a government's creditworthiness. Ratings agencies favor higher levels of fund balance, although other stakeholders (unions, taxpayers and citizens' groups) may consider high levels excessive.

The chart on this page illustrates the unreserved fund balance for the General Fund for the past five years. Other "reserves" or resources available to the General Fund include the Budget Stabilization (rainy day) Fund and the Delinquent Tax Revolving Fund. These funds provide flexibility to deal with planned capital expenditures, unanticipated economic conditions, emergencies, temporary cash flow shortages, or unexpected one-time expenditures. These funds also protect against statutory decreases in County revenues and give the County the chance to take advantage of saving opportunities.

REVENUES AND EXPENDITURES

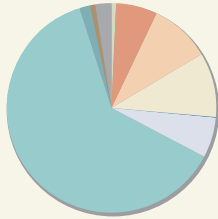


Ensuring the **well-being** of our communities

**The financial facts, figures, tables and graphs** included in this report have been taken from the audited financial statements in the 2006 County Comprehensive Annual Financial Report (CAFR). However, this financial presentation may not agree with generally accepted accounting principles (GAAP). The revenues and expenditures presented herein are for the governmental funds of the County – the general fund, the special revenue funds, debt service and capital projects funds of the County – and do not include other funds, component units and agencies that are considered part of county government.

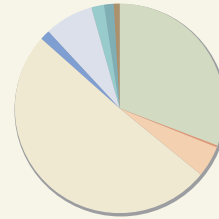
The County's CAFR, which provides complete financial information and disclosures in conformance with GAAP, may be obtained from the Department of Management and Budget, Accounting Division, at 600 Randolph, Detroit, Michigan 48226. In addition, both the CAFR and this report may be viewed on the Charter County of Wayne, Michigan's website at [www.waynecounty.com](http://www.waynecounty.com).

2005-2006  
WAYNE COUNTY  
GOVERNMENTAL FUNDS  
BY EXPENDITURE FUNCTION  
*In Millions*



LEGISLATIVE	\$10.99	0.72%	
JUDICIAL	\$96.63	6.35%	
GENERAL GOVERNMENT	\$142.55	9.37%	
PUBLIC SAFETY	\$151.34	9.95%	
PUBLIC WORKS	\$1.16	0.08%	
PUBLIC SERVICES	\$94.82	6.23%	
HEALTH & WELFARE	\$948.72	62.36%	
RECREATIONAL & CULTURAL	\$25.10	1.65%	
CAPITAL OUTLAY	\$11.85	0.78%	
DEBT SERVICE	\$38.28	2.52%	
			TOTAL \$1.52 BILLION

2005-2006  
WAYNE COUNTY  
GOVERNMENTAL FUNDS  
BY SOURCE OF REVENUE  
*In Millions*



TAXES	\$472.55	30.99%	
LICENSES & PERMITS	\$0.30	0.02%	
FEDERAL GRANTS	\$74.35	4.88%	
STATE GRANTS	\$772.60	50.68%	
LOCAL GRANTS	\$23.28	1.53%	
CHARGES, FEES & FINES	\$115.19	7.56%	
INTEREST & RENTS	\$29.92	1.96%	
OTHER REVENUE	\$22.40	1.47%	
OTHER FINANCING SOURCES	\$14.02	0.92%	
			TOTAL \$1.52 BILLION



County government may not get the attention of state or national levels of government, but it provides a tremendous range of vital services that residents would quickly miss if those services were to disappear.

Many roads, parks, jails and even Headstart programs would not be operated or maintained safely if county government failed to function. The Charter County of Wayne, Michigan, provides an essential, if often undervalued, role in providing a wide variety of services to its communities and constituents.



# Leadership For All

## GENERAL GOVERNMENT SERVICES FOR OUR CITIZENS

General government services are the largest category of services provided by the County. As the executive branch of County government, this group of departments provides the administrative support for running government and includes the elected officials for the County.

Most notable is the **Office of the County Executive**, headed by County Executive Robert A. Ficano. This office administers the 11 executive departments of the County.

Certain of these departments provide the general and administrative support for the County's operations, such as the:

- ★ **Department of Management & Budget**, which provides assessment and equalization, professional accounting, risk management and other financial support services.

- ★ **Department of Personnel/Human Resources**, which recruits, trains, develops, negotiates, and administers compensation to County employees.

- ★ **Department of Technology**, which manages, develops, and maintains the County's data, software, and hardware systems.

- ★ **Department of Corporation Counsel**, which serves as the chief civil legal officer to the County.

Other services are provided by the **Department of Economic and Neighborhood Development**, which develops programs to enhance economic growth. It provides grants to community-based organizations to further economic development efforts. It also fosters organizations whose goal is to create affordable housing and opportunities for residents to become first-time homeowners. Programs such as the Urban Recovery Partnership work to preserve and enhance existing neighborhoods.

Also included in general government services are the other elected officials of the County:

- ★ The **County Clerk** and the **Register of Deeds** are responsible for the general recording and safekeeping of official records.
- ★ The **Prosecuting Attorney** is responsible for safeguarding the community by demanding accountability for those who commit crimes.
- ★ The **County Treasurer** is responsible for the receipt, custody and investment of all County funds and for the collection of taxes.



### *Did You Know?*

The Wayne County Clerk's marriage licensing, and birth and death services are now accessible on the Internet.



In 2005, the Department of Economic and Neighborhood Development assisted 52 families with down payment and closing costs, allowing them to become first-time homebuyers. In addition, they helped finance more than 250 residential units in 10 affordable housing developments.



The Deed Fraud Unit was developed in collaboration between the Wayne County Prosecutor's Office, the Wayne County Register of Deeds and the Wayne County Sheriff's Department.



Wayne County Register of Deeds land records are searchable at [www.waynecountylandrecords.com](http://www.waynecountylandrecords.com).



The Treasurer's Office website - [www.treasurer.waynecounty.com](http://www.treasurer.waynecounty.com) - includes more than 800,000 property tax listings and allows for web payments for delinquent taxes.



# Direction For All

## LEGISLATIVE SERVICES FOR OUR CITIZENS

The legislative arm of County government is the **Wayne County Commission**, a body of 15 elected officials representing districts throughout the County and serving two-year terms. The Commission is responsible for:

- ★ overseeing the County's \$2.2 billion total budget
- ★ approving contracts
- ★ executing ordinances and resolutions
- ★ making appointments to various boards

Its mission is to ensure that Wayne County citizens receive their full value for each dollar expended by the County.

The Commission accomplishes this mission through:

**Office of the Auditor General** which examines and evaluates County activities and operations aimed at improving the accountability of the use of public funds. The **Policy and Research Division** provides support to Commission members through

assessment, evaluation and analysis of contracts, proposals and other actions coming before the Commission.

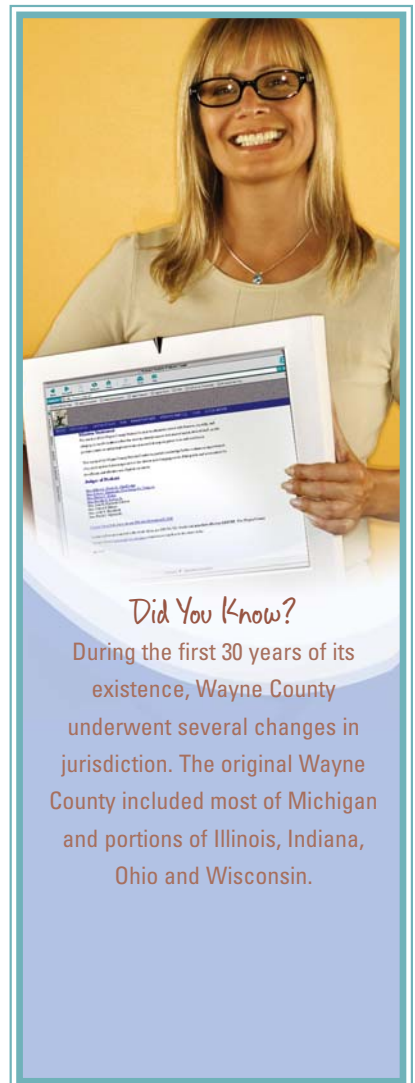
### Standing Committees of the County Commission meet bi-weekly:

1. Ways and Means
2. Audit
3. Economic Development
4. Environment, Drains and Sewers
5. Government Operations
6. Health and Human Services
7. Public Safety
8. Judiciary and Homeland Security
9. Public Services

These meetings are open to the public.

Special committees, task forces and commissions are established by the Commission. The Commission also holds town meetings to address critical issues affecting the citizens of Wayne County.

See p.13 for a list of County Commissioners and the districts they serve.



### Did You Know?

During the first 30 years of its existence, Wayne County underwent several changes in jurisdiction. The original Wayne County included most of Michigan and portions of Illinois, Indiana, Ohio and Wisconsin.



# Justice For All

## JUDICIAL SERVICES FOR OUR CITIZENS

Resolving civil, domestic, criminal and juvenile matters falls to two courts managed by the County: the Third Circuit Court and the Probate Court.

### **Third Circuit Court**

The Third Circuit Court is the largest circuit court in Michigan and the fifth largest general jurisdiction court in the nation, with 64 judges and more than 750 employees. The Chief Judge oversees its three divisions:

**Civil Division** – The Civil Division has 22 judges and resolves general civil cases under \$25,000. This division acts as the appellate court for civil appeals from the district courts throughout Wayne County.

**Criminal Division** – The Criminal Division's 31 judges have sole jurisdiction over felonies and high misdemeanors. This division acts

as the appellate court for criminal appeals from the district courts throughout Wayne County.

**Family Court Division** – The Family Court Division has responsibility for hearing both domestic relations and juvenile cases that involve the members of a single family. By separating these cases from other court matters, the County hoped to create a greater sensitivity and understanding of the circumstances a family unit is facing. This division's domestic, juvenile, and Friend of the Court operations address domestic relations, juvenile delinquency, adoption, abuse and neglect, spousal support, child support, custody and parenting matters.

### **Probate Court**

The Probate Court's eight judges preside over all matters related to settlement of estates and trusts and the appointment of trustees, guardians and conservators. This court is the busiest court in the state, processing one third of total probate filings. On-line access to case information may be viewed at [www.wcpc.us](http://www.wcpc.us)



### Did You Know?

The County Library provides 205 public access computers, allowing residents to check email, access the Internet, prepare resumes, search for jobs, file unemployment claims, study for employment tests and much more.

Wayne County Headstart has an average of 90% of its enrollees screened for health and dental services, beating the national average of 85%.

Wayne County Senior Citizen nutrition programs delivered more than 740,000 meals and traveled over 391,000 miles in FY2006. More than 1,300 individuals have volunteered for the program in the last 20 years.



## Care For All

### HEALTH AND WELFARE SERVICES FOR OUR CITIZENS

The County's health and welfare activities focus on those most in need of protection: infants, adolescents, the elderly and the disabled. Departments include:

- ★ **Health and Human Services**
- ★ **Children and Family Services**
- ★ **Senior Citizens and Veterans Affairs**

Certain other services, such as environmental clean-up programs, are provided through the **Department of Environment**.

Core programs include:

**Headstart**, providing comprehensive child development services in the areas of education, nutrition and social services.

**Cooperative Extension (through Michigan State University)**, providing educational services for families, such as peer counseling for breast feeding mothers, and food safety and nutrition programs.

**Prevention Services, Alternative Work Force Program and Juvenile Services**, providing a coordinated community justice, educational and rehabilitative service delivery network for our troubled adult and youth.

**Library**, providing reference material and children programming services for citizens, including the blind and physically handicapped.

**Mental Health**, providing a wide array of special support and services for citizens with severe emotional disturbances and developmental disabilities.

**Patient Care Management and Public Health**, providing innovative health care and dental services to indigent residents and small business, disease education and prevention, and environmental health services.

**Senior Citizens and Veteran's Affairs**, providing adult day care, meal delivery, prescription drugs, and referral and outreach services for senior citizens and financial and burial assistance for indigent soldiers, sailors, marines, nurses, and their families.

**Medical Examiners**, providing investigative and notification services for deceased loved ones and their families.



# Protection For All

## PUBLIC SAFETY SERVICES FOR OUR CITIZENS

Major emergencies, disasters and terrorist threats or attacks are not issues we like to think about or plan for. But that is the crucial role of the **Department of Homeland Security/ Emergency Management**, whose mission is to preserve and protect the lives and property of Wayne County citizens.

Other Public Safety services include the **County Jail** and **youth home** mental health services.

The most well recognized of the County's public safety services is the **Office of the Sheriff** which provides quality law enforcement to the citizens of Wayne County, as well as safe, secure and humane detention facilities for those citizens who find themselves temporarily on the wrong side of the law. The Sheriff's operations are administered through its court, executive, field services and jail divisions.

**Court Division**, maintains security and order in the courtrooms of the Third Circuit and Probate Courts. Various units within this division deliver official notices, subpoenas and other court documents. They also locate and arrest individuals delinquent in court-ordered child support payments and locates individuals under felony warrants.

**Executive Division**, provides administrative guidance, policy direction and enforcement for Sheriff employees.

**Jail Division**, oversees the operation of the three jail detention facilities in accordance with the provisions of the Michigan Constitution.

**Field Services Division**, provides a full range of crime prevention, ground and waterway patrol, and investigative services. This division also houses the special operations units, such as the covert Drug Enforcement Unit and the Internet Unit.

### Did You Know?

Our community corrections program is the model for the State of Michigan.

Since 1984, the Emergency Management Organization has conducted more than 50 full-scale disaster exercises and has successfully managed 18 major emergency/disaster incidents.

The Alert System implemented in January 2006 allows Wayne County residents to be notified via phone, text message, pager or email in the event of emergencies, school closings and traffic conditions on County roads. Sign up at [www.wayne.getalerts.org](http://www.wayne.getalerts.org)



# Liberty For All

## PUBLIC SERVICES FOR OUR CITIZENS

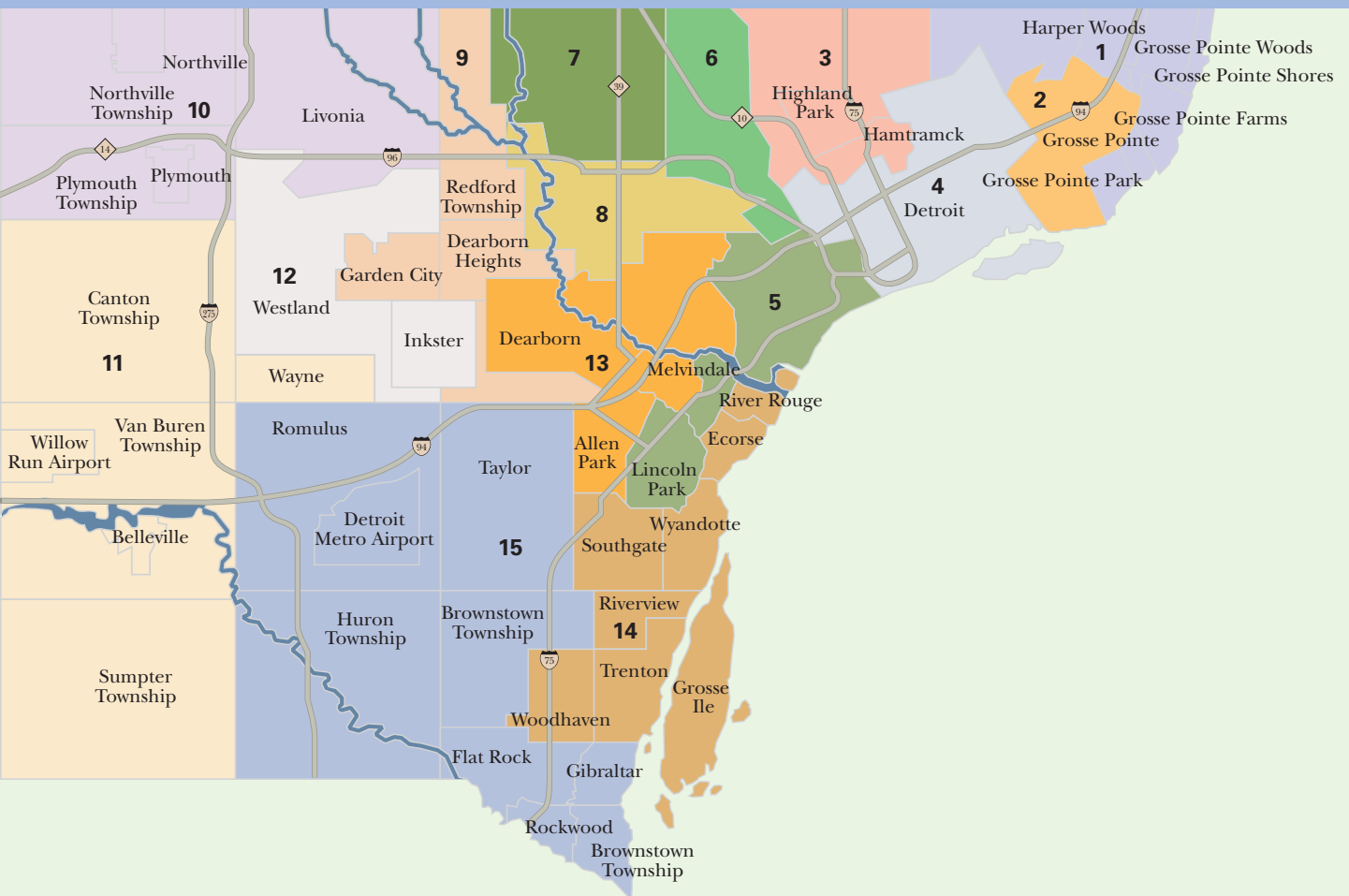
In one of the County's most visible roles, the **Department of Public Services** maintains the County's road system – more than 1,400 miles of primary and local roadways and 462 miles of State trunk lines and freeways. Because of the key role roads play in the safety of our residents and visitors as they travel to work, school and shopping, this department is vital to many of us each day. The Department is also responsible for maintaining the County's parks and recreational facilities, as well as certain other County facilities to provide better and safer working conditions for employees and visitors.

### *Did You Know?*

Wayne County consists of more than 7,500 acres of public recreation land, including 391 miles of rivers and streams. Thus, due to our natural environment, we are poised to deliver safe and enjoyable leisure and recreation facilities and activities to Wayne County residents.

Whether picnicking, bicycling, canoeing, sledding, fishing, running, walking, golfing or swimming, Wayne County Parks is the destination for family fun!





**WAYNE COUNTY COMMISSION**  
15 Commissioners And Districts

**Jewel C. Ware**  
Chairwoman  
4th District

**Edward A. Boike, Jr.**  
Vice Chair  
15th District

**Kay Beard**  
Vice Chair Pro Tempore  
12th District

**Timothy P. Killeen**  
1st District

**Keith D. Williams**  
6th District

**Laura Cox**  
10th District

**Bernard Parker**  
2nd District

**Burton Leland**  
7th District

**Kevin McNamara**  
11th District

**Moe Blackwell**  
3rd District

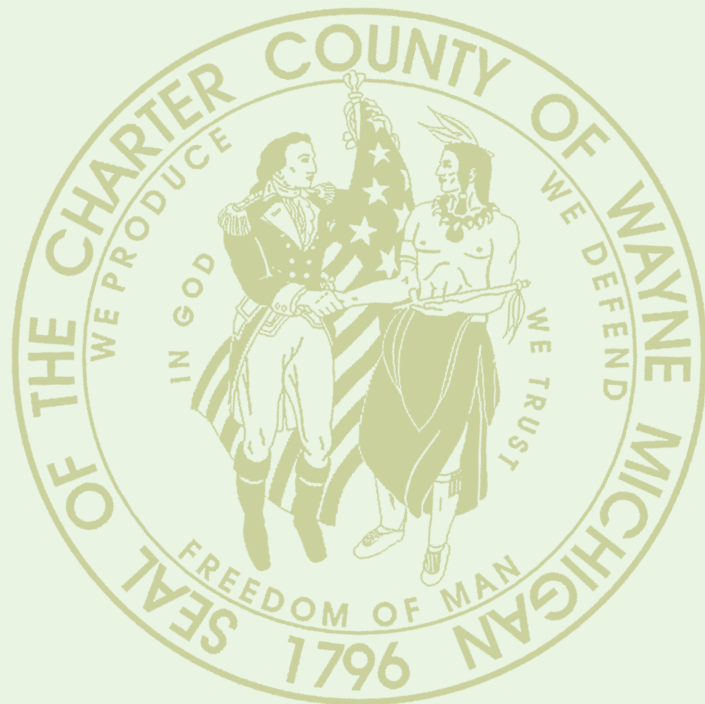
**Alisha R. Bell**  
8th District

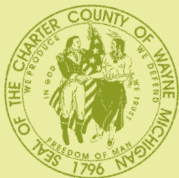
**Gary Woronchak**  
13th District

**Ilona Varga**  
5th District

**Philip M. Cavanagh**  
9th District

**Joseph Palamara**  
14th District





600 Randolph Street • Detroit, Michigan 48226  
CHARTER COUNTY OF WAYNE, MICHIGAN