

Persons Points of View

Volume 3, Issue 5

A Consumer's Look

December, 2005

Editor: Ted Chipps
Customer Service

Next Monthly
Consumer
Meeting

December 15,
2005

11:00 am

6th Floor Auditorium

D-WCCMHA

640 Temple

Detroit, MI 48201

Summary of
The Detroit-Wayne
County Community
Mental Health
Agency's
Draft Plan for Change

1

Charting the Course!!!

December
Meeting to
Describe
Agency
Draft Plan

As you know, Transitional Executive Director Richard Visingardi has prepared an Agency draft plan for change. He and others of the executive leadership team will present the plan at the December Monthly Consumer Meeting.

The Agency Plan
is a map of how
the Wayne
County Community
Mental Health
System can be
improved



2

A Consumer-Driven Publication from the
Detroit-Wayne County Community Mental Health Agency
640 Temple, Detroit, MI 48201 (313) 833-2500

More Efficient!!!

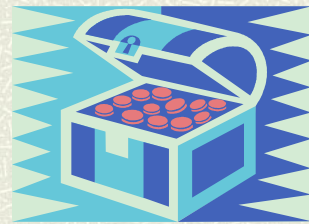


These improvements will help the Agency and its networks deliver services to you faster and more efficiently

3

Cash Back!!!

Money saved will be used to provide additional treatment and services for you as well for the larger community base



4

More Effective



The operations
of the Agency
will be
re-designed

5

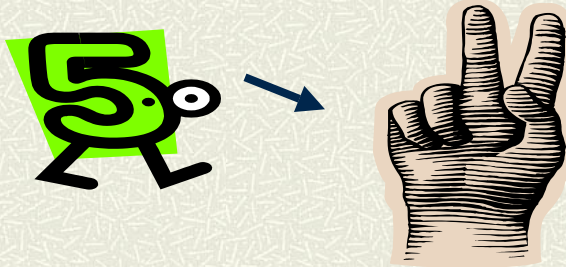
More Helpful

- Recipient Rights
 - Customer Service
- Will work even closer
together to assist you

6

Less Overhead!!!

MCPNs Reduced to TWO



- One for Adults with serious mental illness/substance abuse disorder/and children with serious emotional disturbance
- One for Persons with developmental disabilities

7

Simpler to Get Services

Access to Services will be centralized



(Access Center)

8

More Satisfaction!!!

- Faster connections to services for which you qualify
- More immediate connection to a service provider you choose



9

Hitting the Target!!!

The Goal Is To Chart the Way in Helping You Achieve a Sustainable and Enriched Life Style!



tc 12/05

10

See the Full Plan!!!

You May View This
Plan on the Agency
Website at

www.dwccmha.com.



11

Respond

You may submit feedback using the
following methods:

o Voice Mail: 313-833-2310

o E-Mail:

Mhfeedback@co.wayne.mi.us

o U.S. Mail: D-WCCMHA

640 Temple

Detroit, MI 48201

Attention: Agency Plan

12

Send In Your Ideas

The Agency will be accepting your feedback or comments for consideration in the Final Plan through the close of business (5:00 pm) on:

Wednesday, December 21, 2005



13

For Your Convenience

Questions? Comments?

There are two forms attached which you may use to submit your ideas to the Agency



14

Questions/Comments



My question/or comment is:

My Name (Optional) is:

Questions/Comments



My question/or comment is:

My Name (Optional) is:
