

# Fall Bug Hunt



Have some fun and help Friends of the Rouge assess the health of the Rouge River by joining a team of volunteers to search for critters in the streambed

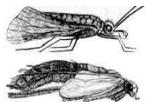


Saturday  
October 17, 2009  
9:00 a.m. - 4:00 p.m.

Meet at

Schoolcraft College

In the lower level of the VisTaTech Center (Waterman Room)  
18600 Haggerty Road  
Livonia, MI 48152-3932



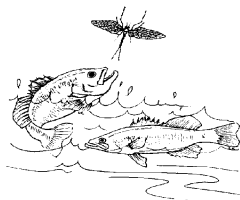
## Benthic Macroinvertebrate Sampling Program

Volunteers will be divided into teams prior to their arrival on October 18th. The teams of volunteers, led by trained volunteers, will travel to 2 different sites in the headwaters of the Rouge River Watershed to sample. The remaining volunteers sort through the samples collected from the stream by the team leader for benthic macroinvertebrates (i.e. "bugs" or more appropriately, animals without a backbone that live in the streambed for all or part of their life cycle). The abundance and diversity of the organisms found at each site provides information on the health of the stream. Results are given to Rouge River watershed communities, the Michigan Department of Environmental Quality, volunteers and others.

\*\*\* No experience is necessary. Children welcome when accompanied by one adult per child. \*\*\*

Registration required by October 2, 2009.

Please call (313) 792-9621 or e-mail [monitoring@therouge.org](mailto:monitoring@therouge.org) to register or for more information.



**Friends  
of the ROUGE**

[www.therouge.org](http://www.therouge.org)

Coordinated by Friends of the Rouge and supported by the Alliance of Rouge Communities.